



- ✓ Promotes biodiversity – allows grass to grow through
- ✓ Up to 3 meters fall height
- ✓ Easy and quick installation with click system
- ✓ 92% recycled material
- ✓ Long durability

INSTALLATION GUIDE

Recommended fall height for a 45 mm mat is 1.6 m.

Recommended fall height for a 65 mm mat is 2.3 m.

When combining 65 mm and 45 mm mats, a fall height of 3 m can be achieved.

Recommendations

01



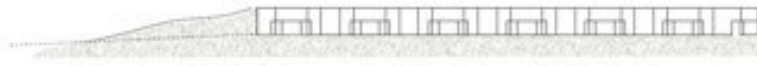
Installed flush with the ground

02



Surface-mounted with recessed edges

03



Surface-mounted with filled soil edges

Preparation

01

Excavate to the thickness of the mat. Loosen or replace the soil as needed.

02

Loosen or replace the soil as needed. Fill any gaps.

03

Loosen or replace the soil as needed.

Installation

- Lay the mats so they interlock. They overlap by 3 cm. The straight edge of the mat can be laid in a staggered pattern.
- Use an electric saw for quick cutting of holes, patterns, and edges.
- Fill with screened topsoil, washed gravel, or similar material. Reseed with grass if necessary.
- When installing on existing impact sand, the sand must be compacted and leveled. We recommend a 65 mm mat if the base is sand/gravel and grass is also desired.

